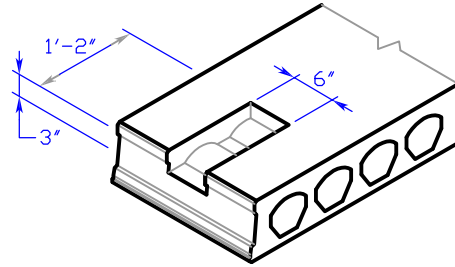


# NICORE CONNECTION DETAIL

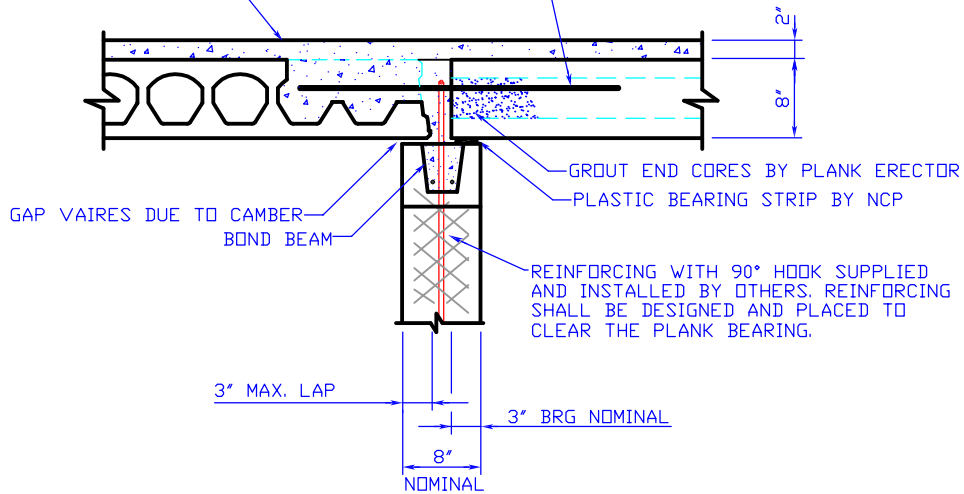
## HOLLOW CORE PLANK CONNECTION

### DETAIL OF INTERIOR MASONRY WALL



REBAR @ 4'-0" O.C. GROUTED INTO POCKETS CAST IN PLANK. REBAR SUPPLIED BY OTHERS, AND GROUTED SOLID IN POCKETS BY PLANK ERECTOR

SEE NOTE 1



#### NOTES:

1. N.C.P. WILL PROVIDE A BROOMED FINISH IN ORDER TO CREATE A COMPOSITE TOPPING. C.I.P. TOPPING BY OTHERS IS TO BE 3,000 PSI. (NORMAL WEIGHT CONCRETE).
2. THE DESIGN OF CONNECTIONS FOR HOLLOW CORE PLANK TO OTHER BUILDING COMPONENTS IS THE RESPONSIBILITY OF THE ENGINEER OF RECORD, SINCE THEY ARE PART OF THE GLOBAL DESIGN OF THE STRUCTURE.

**NITTERHOUSE**  
CONCRETE PRODUCTS

P. O. Box 2013  
P: (717) 267-4505



Chambersburg, PA 17201  
F: (717) 267-4518

www.nitterhouse.com

