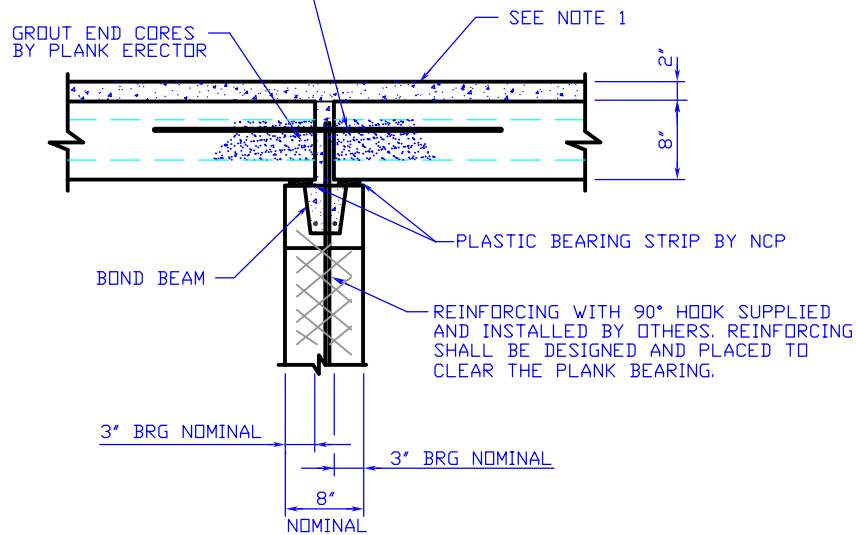


# NICORE CONNECTION DETAIL

## HOLLOW CORE PLANK CONNECTION

### DETAIL OF BEARING ON INTERIOR WALL

#4 MAX. SIZE REBAR GROUTED SOLID @ GROUT KEY OR CORE (I.E. 4'-0" O.C. MAX), SUPPLIED BY OTHERS, AND INSTALLED BY PLANK ERECTOR (SEE NOTE 3)



#### NOTES:

1. N.C.P. WILL PROVIDE A BROOMED FINISH IN ORDER TO CREATE A COMPOSITE TOPPING. C.I.P. TOPPING BY OTHERS IS TO BE 3,000 PSI. (NORMAL WEIGHT CONCRETE).
2. THE DESIGN OF CONNECTIONS FOR HOLLOW CORE PLANK TO OTHER BUILDING COMPONENTS IS THE RESPONSIBILITY OF THE ENGINEER OF RECORD, SINCE THEY ARE PART OF THE GLOBAL DESIGN OF THE STRUCTURE.
3. IF GROUT KEYS DO NOT ALIGN, BREAK OUT TOP OF CORE IN PLANK AND GROUT REBAR IN CORE/GROUT KEY FOR FULL LENGTH OF REBAR.

**NITTERHOUSE**  
CONCRETE PRODUCTS

P. O. Box 2013  
P: (717) 267-4505



Chambersburg, PA 17201  
F: (717) 267-4518

www.nitterhouse.com

