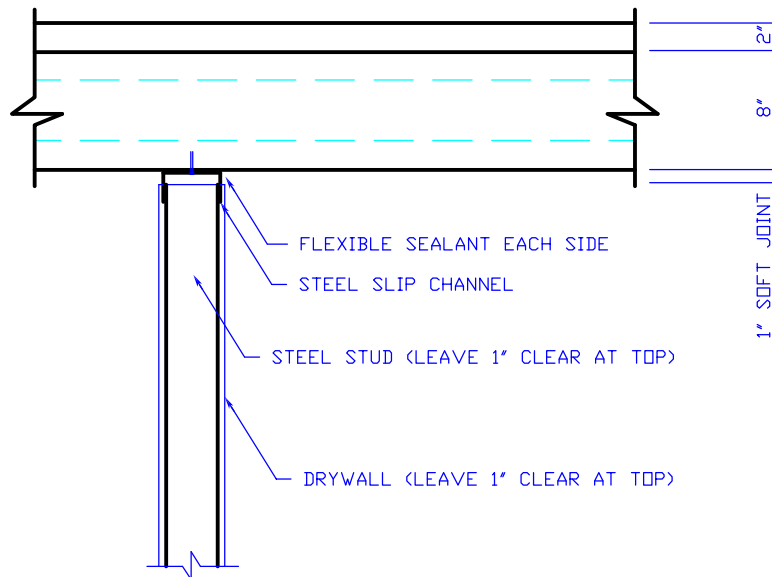


# NICORE CONNECTION DETAIL

## HOLLOW CORE PLANK CONNECTION

### SOFT JOINT AT NON-BEARING PARTITION WALL



#### NOTES:

1. 1" CLEARANCE (SOFT JOINT) SHALL BE PROVIDED ABOVE NON-LOADBEARING PARTITIONS TO ALLOW FOR DEFLECTION OF THE HOLLOW CORE PLANK.

**NITTERHOUSE**  
CONCRETE PRODUCTS

P. O. Box 2013  
P: (717) 267-4505



Chambersburg, PA 17201  
F: (717) 267-4518

[www.nitterhouse.com](http://www.nitterhouse.com)

PAGE 18



October 2013