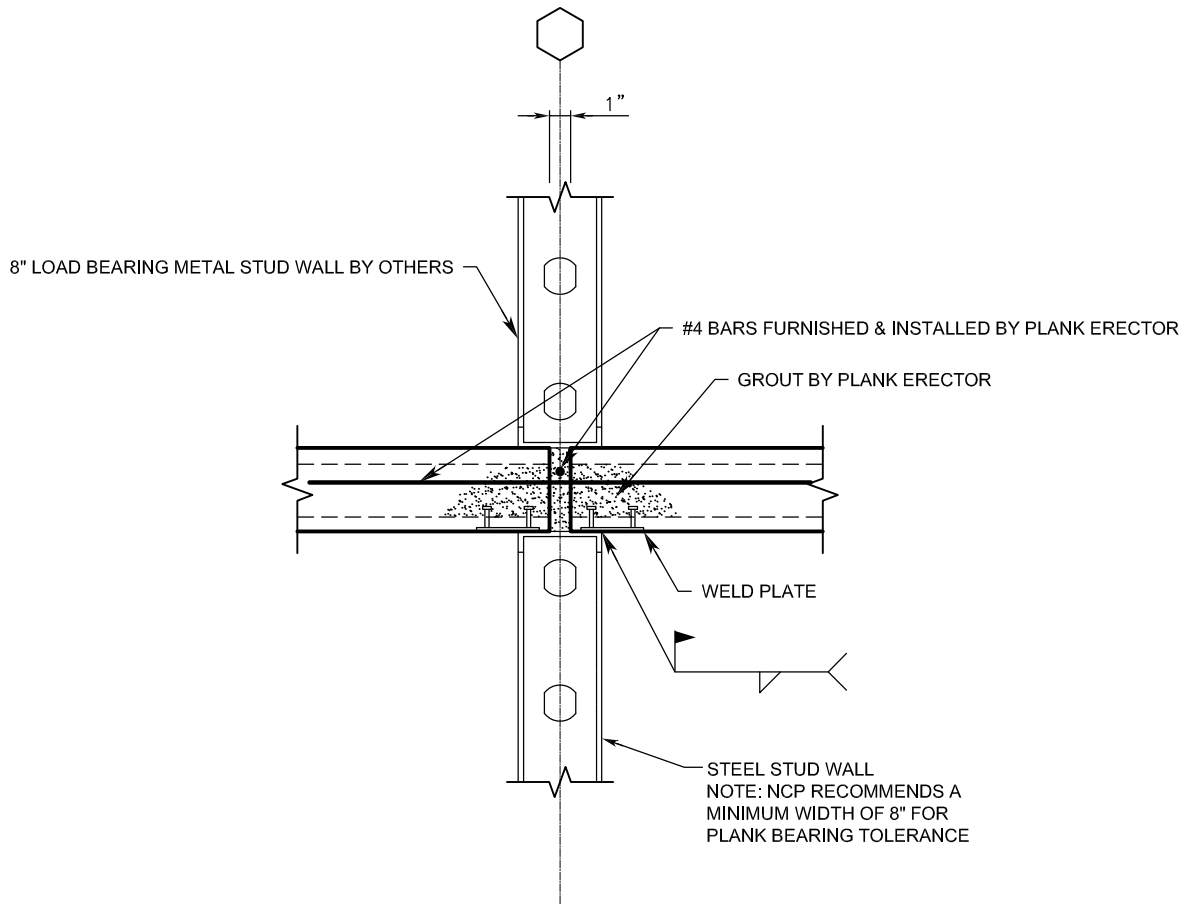


NICORE CONNECTION DETAIL

BEARING ON STEEL STUD WALL WITH WELD PLATE BRACING



NOTES:

1. WELD PLATES ARE FOR BRACING THE STEEL STUD WALLS AND FOR TRANSFERRING DIAPHRAGM FORCES. THEY ARE NOT TO HOLD THE PLANKS ON THE STUD WALLS. THE CONTRACT DRAWINGS SHALL INDICATE THE REQUIRED SPACING IN 4'-0" INCREMENTS.