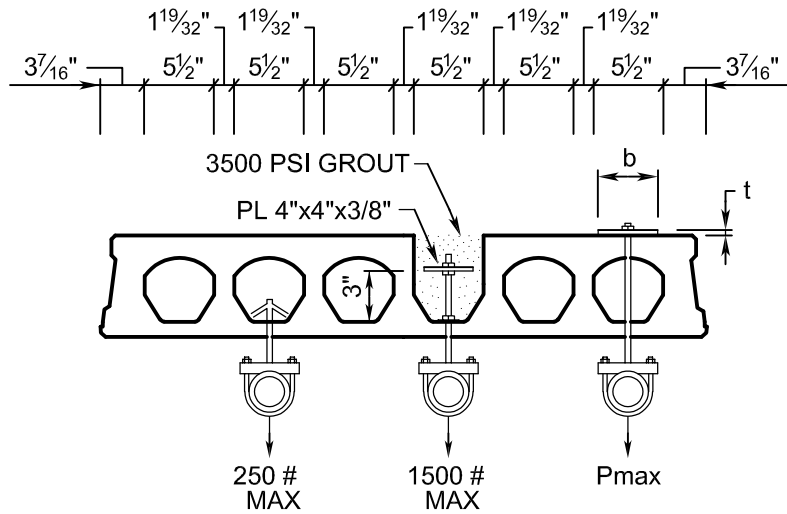


# NICORE CONNECTION DETAIL

## CAPACITIES FOR MECHANICAL HANGERS



(HANGERS TO BE SPACED NO CLOSER THAN 7 1/8" O.C.)

NOTE: FOR LIGHTER LOADS DRILL-INS AND POWDER ACTIVATED FASTENERS CAN BE USED WITH A MAXIMUM DEPTH OF 1".

b (in.)	t (in.)	Pmax
2"	3/8"	710#
3"	3/8"	890#
4"	3/8"	1130#
5"	3/8"	1500#