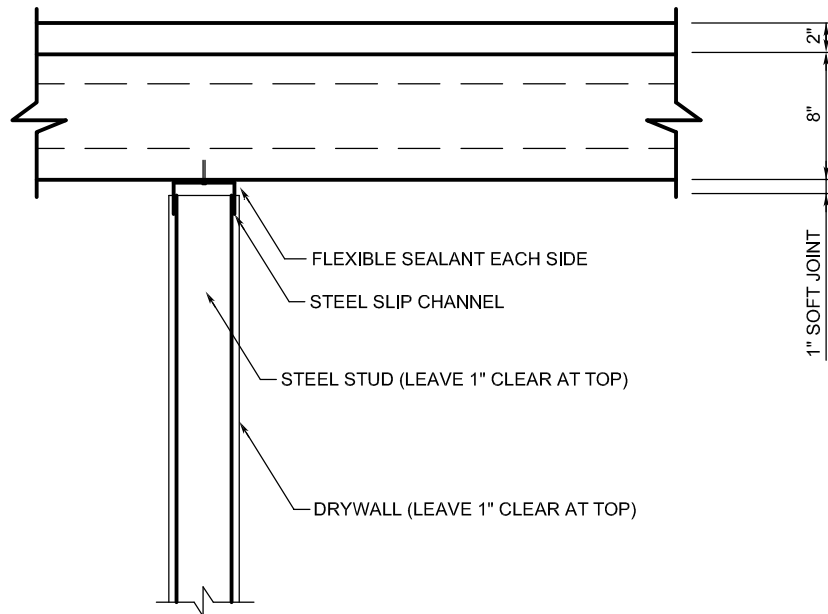


NICORE CONNECTION DETAIL

SOFT JOINT AT NON-BEARING PARTITION WALL



NOTES:

1. 1" CLEARANCE (SOFT JOINT) SHALL BE PROVIDED ABOVE NON-LOADBEARING PARTITIONS TO ALLOW FOR DEFLECTION OF THE HOLLOW CORE PLANK.