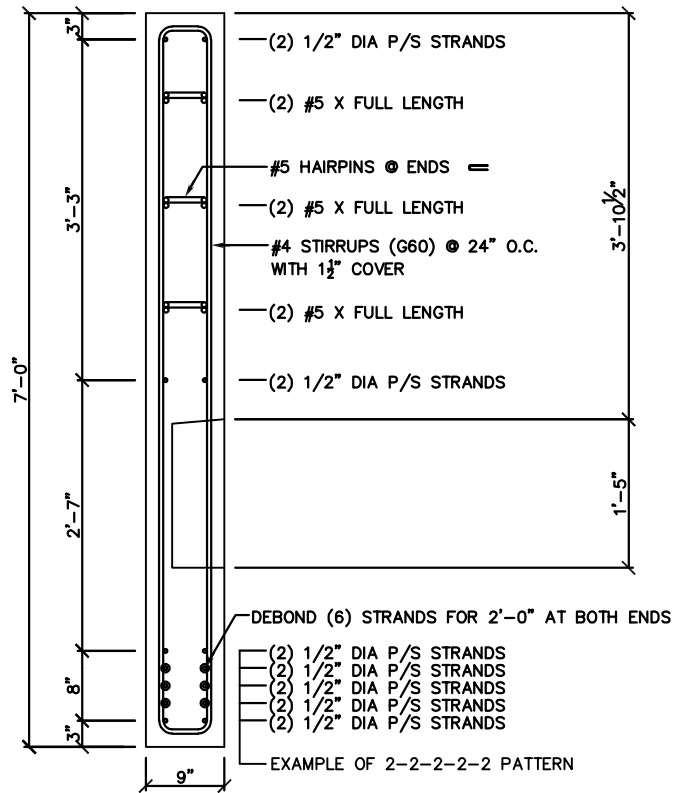


# Prestressed Concrete Spandrel Panel 9SP84

## PHYSICAL PROPERTIES

A = 756 in. <sup>2</sup>	S <sub>b</sub> = 10,584 in. <sup>3</sup>
I = 444,528 in. <sup>4</sup>	S <sub>t</sub> = 10,584 in. <sup>3</sup>
Y <sub>b</sub> = 42.00 in.	Wt. = 788 PLF
Y <sub>t</sub> = 42.00 in.	



## DESIGN DATA

1. Precast Strength @ 28 days = 6,000 PSI
2. Precast Strength @ release = 3,500 PSI.
3. Precast Density = 150 PCF
4. Strand = 1/2"Ø 270K Lo-Relaxation.
5. Ultimate moment capacity shown below is for full strand development & tension controlled section.
6. Maximum bottom tensile stress is  $12\sqrt{f_c} = 930$  PSI
7. Flexural strength capacity is based on stress/strain strand relationships and is slightly variable.
8. Deflection limits were not considered when determining allowable loads in this table.
9. All superimposed live loads listed are controlled by ultimate flexural strength, not allowable stresses.
10. All superimposed load is treated as live load in the flexural strength analysis. To determine the allowable live load if the amount of superimposed dead load is known use the following conversion method...

$$\text{Allowable Live Load} = \frac{(1.6)(\text{Load Table Value}) - (1.2)(\text{Superimposed Dead Load})}{1.6}$$

11. If the above conversion is used then allowable stress limits must be checked so they are not exceeded.

### ALLOWABLE SUPERIMPOSED LIVE LOADS (KLF)

Bottom Strands	Middle Strands	Top Strands	Longitudinal Bars	Strand Debonding	Moment Capacity	SPAN					
						20'	24'	30'	36'	40'	48'
2-2-0-0-0	2	2	6 - #5	None	15,705 "k	15.54	10.76	6.67	4.45	3.49	2.24
2-2-2-0-0	2	2	6 - #5	2 Strands For 2'-0" At Ends	20,703 "k	18.62	13.71	8.73	6.06	4.80	3.15
2-2-2-2-0	2	2	6 - #5	4 Strands For 2'-0" At Ends	25,321 "k	21.50	16.43	10.63	7.48	6.00	3.98
2-2-2-2-2	2	2	6 - #5	6 Strands For 2'-0" At Ends	29,664 "k	23.74	18.65	12.43	8.78	7.13	4.77